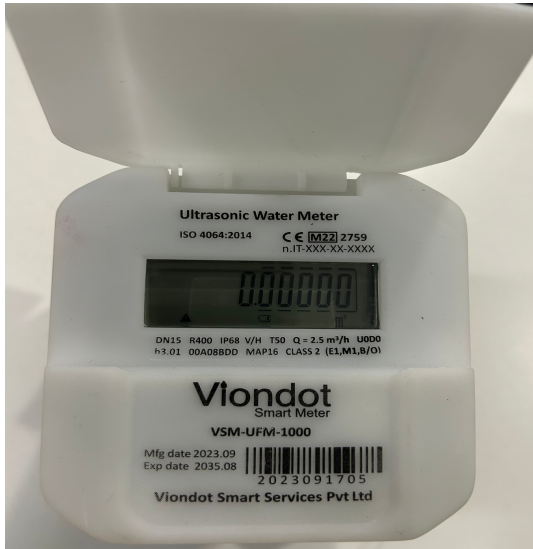


Viondot Smart Ultrasonic Water Meter



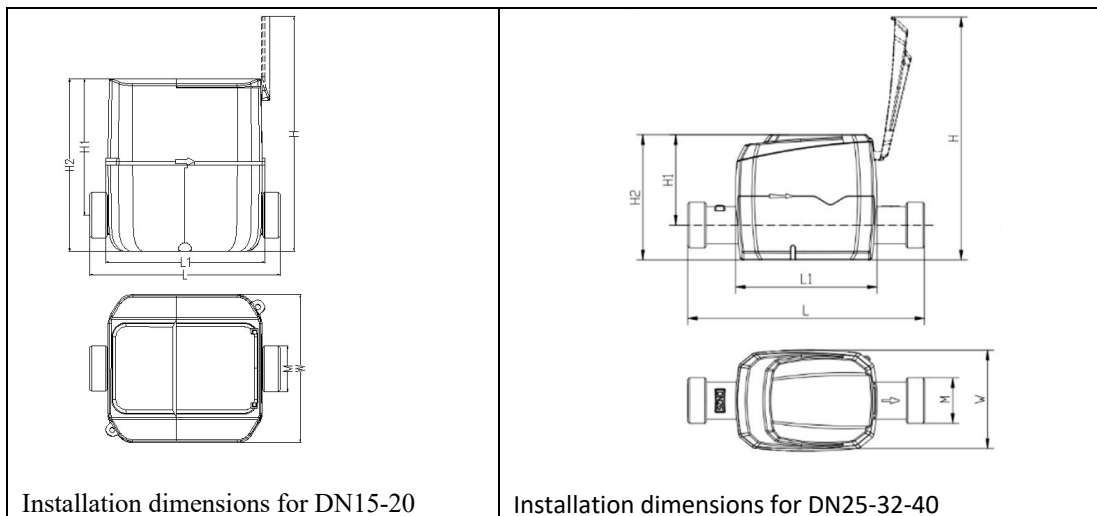
Technical Specifications

| Size | DN15 | DN20 | DN25 | DN32 | DN40 |
|---|-----------------------------|-------|--------|-------|-------|
| Minimum Flow Rate Q1 (m ³ /h) | 0.0063 | 0.010 | 0.0157 | 0.025 | 0.040 |
| Transitional Flow Rate Q2 (m ³ /h) | 0.010 | 0.016 | 0.0252 | 0.040 | 0.064 |
| Permanent Flow Rate Q3 (m ³ /h) | 2.50 | 4.00 | 6.30 | 10.00 | 16.00 |
| Overload Flow Rate Q4 (m ³ /h) | 3.125 | 5.00 | 7.875 | 12.50 | 20.00 |
| Flow Range Ratio (Q3/Q1) | 400 | | | | |
| Flow Sensor Type | Ultrasonic | | | | |
| Pressure | Can measure Static Pressure | | | | |
| Temperature Class | T50 | | | | |
| Application Ambient temperature | 0 – 55 °C | | | | |
| Pipe Materials | Brass | | | | |
| Metrological / Accuracy Class | Class 2 | | | | |
| Sample Rate | 8Hz | | | | |
| Working Pressure Range | from 0.3 bar to 16 bar | | | | |
| Pressure Losses | Δp63 | | | | |
| Flow Profile Sensitivity | U0 D0 | | | | |
| Max Admissible Working Pressure (bar) | 16 | | | | |
| Protection Class | IP68 | | | | |
| Display Indication | LCD | | | | |
| Resolution | 1 L | | | | |

| | | | | | |
|--|---|-------------|-------------|-------------|-------------|
| Size | DN15 | DN20 | DN25 | DN32 | DN40 |
| Indicating Range m ³ | 999999.999 | | | | |
| Position/Installation | Any position (Horizontal or Vertical) | | | | |
| Battery Lifespan | ≥ 12 years | | | | |
| Power Consumption | Less than 28 μA | | | | |
| Flow Data Storage | Accumulation Flow (90 days) | | | | |
| Reverse Flow | Meters not designed to measure reverse flow but provide alarm on detecting reverse flow | | | | |
| Electromagnetic Environment Grade | E1 | | | | |
| Mechanical Environment Grade | M1 | | | | |
| Environmental Class | O | | | | |
| Interface & Communication | LoRaWAN & NB-IoT | | | | |
| Meter Data Management (MDM) | | | | | |
| Central Monitoring Station | | | | | |
| Complete Billing & Analysis Solution | | | | | |
| Support centralized Server/mobile App based water consumption monitoring | | | | | |
| Comply with all drinking water supply, municipal department requirements | | | | | |
| MID Certified, ISO 4064-2014 and FCRI Certified | | | | | |

Dimensions

| Nominal size | [mm] - DN | DN15 | DN20 | DN25 | DN32 | DN40 |
|------------------|-----------|-------------|-------------|-------------|-------------|-------------|
| | [inch] | 1/2" | 3/4" | 1" | 1 1/4" | 1 1/2" |
| Length[mm] - L | | 110/165 | 130/190 | 260 | 260 | 300 |
| Height [mm] – H2 | | 97 | 97 | 115 | 115 | 117 |
| Width [mm] - W | | 90 | 90 | 90 | 90 | 90 |
| Connection - G | | 3/4" G | 1" G | 1 1/4" G | 1 1/2" G | 2" G |



For further enquiries, contact - +919999 0000 80, +9198736 55555, email: info@viondot.com
www.viondot.com